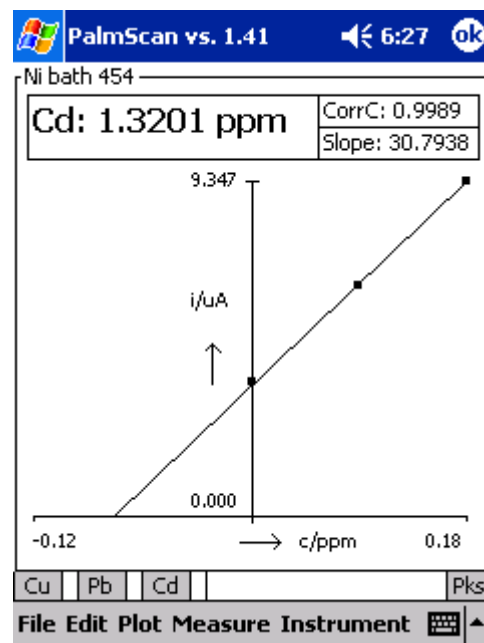
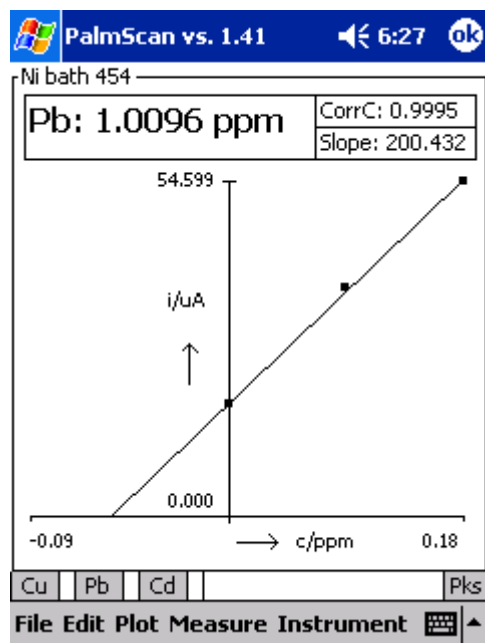
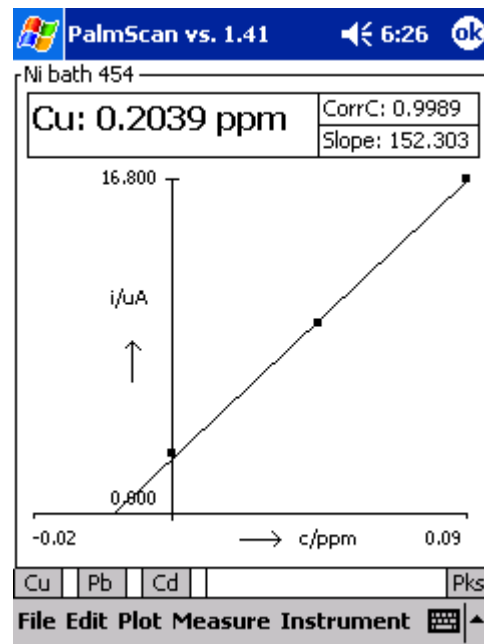
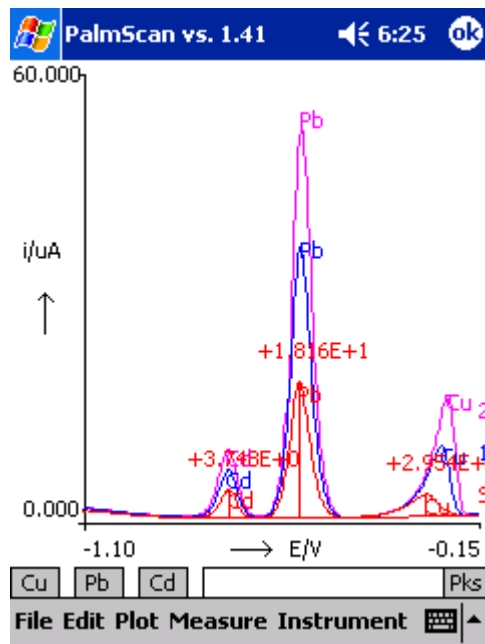


# Voltammetric measurements in Nickel bath samples with the PalmSens voltammetric analyser

Sensor: Methocell heavy metal sensors from University of Florence  
 Sample: Nickel bath  
 Method: Square wave anodic stripping voltammetry

Sample pretreatment: no  
 Cell solution: 1 ml sample with 10 ml

## Sample 1



## Sample 2

